

Open for 2-3 year olds  
Aspire, Achieve, Thrive



**Colham —  
— Manor**  
Primary School  
*Aspire, Achieve, Thrive*

# Tiddlers

## Nursery Prospectus



# Welcome

Your child's exciting learning  
journey begins here...





# Our Approach

All that we do at Tiddlers Nursery at Colham Manor Primary School, is guided by our whole school values, **REACH.**



We provide children with the best possible start to their education and have high aspirations for what they can achieve. We know that all children are natural learners who will thrive in the right environment.



**Strong partnerships with families and links to a diverse school community.**



**Kind, caring and qualified early years practitioners.**



**Carefully crafted learning opportunities and a research based curriculum enhanced to meet the interests and starting points of your child.**



# Admissions

We offer part time and full time places.

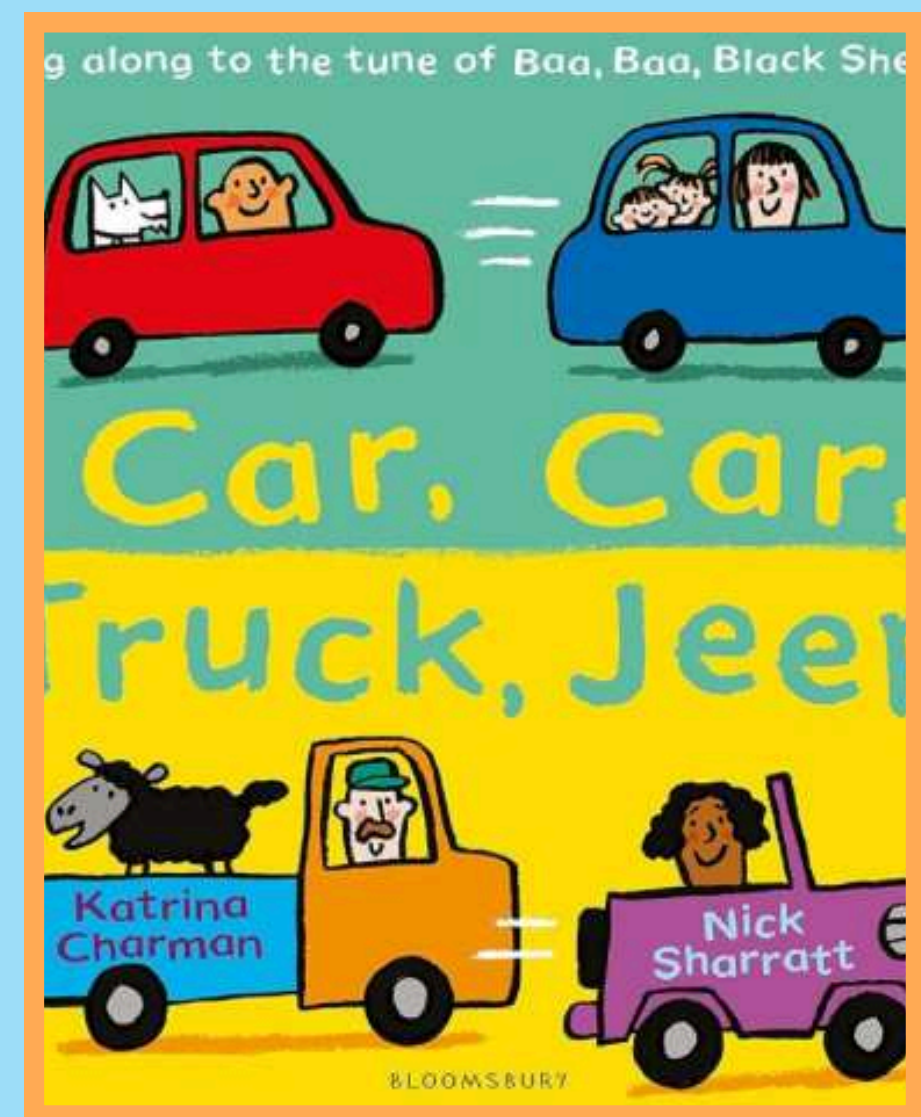
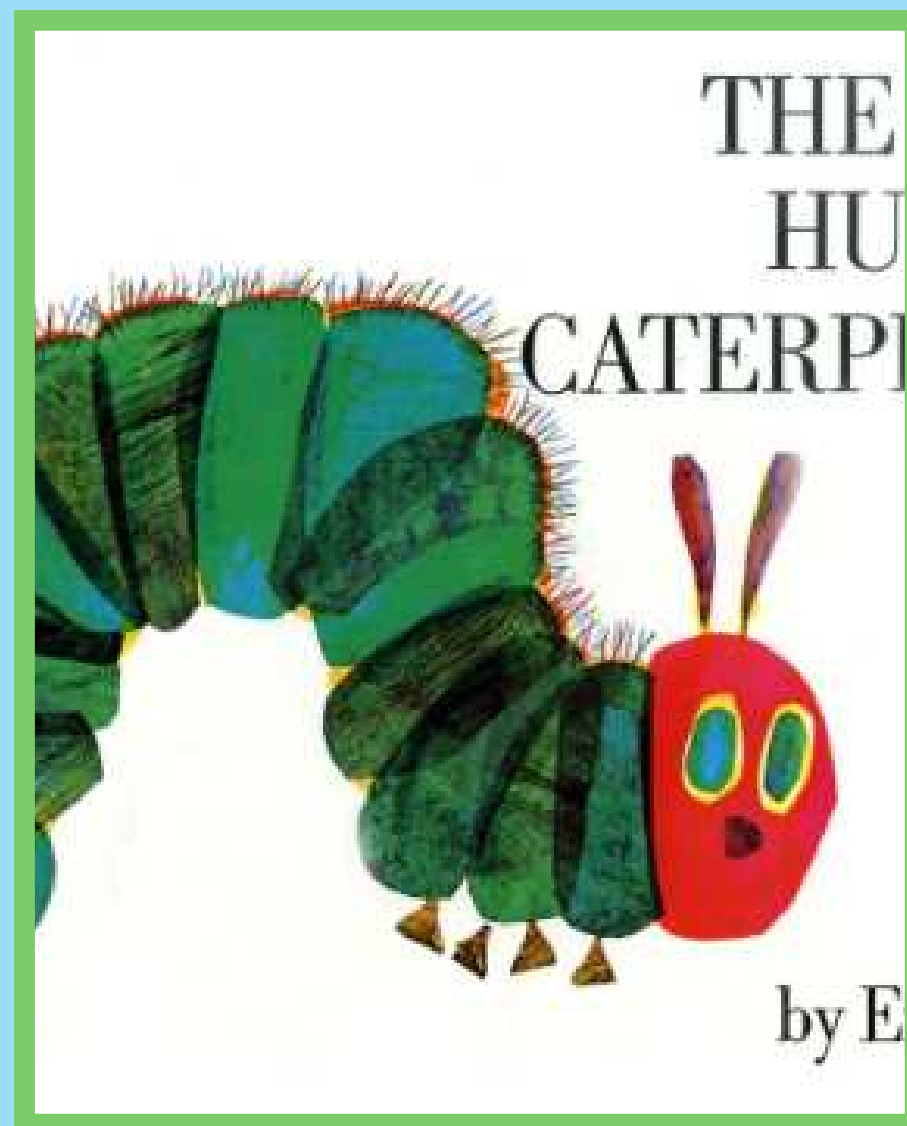
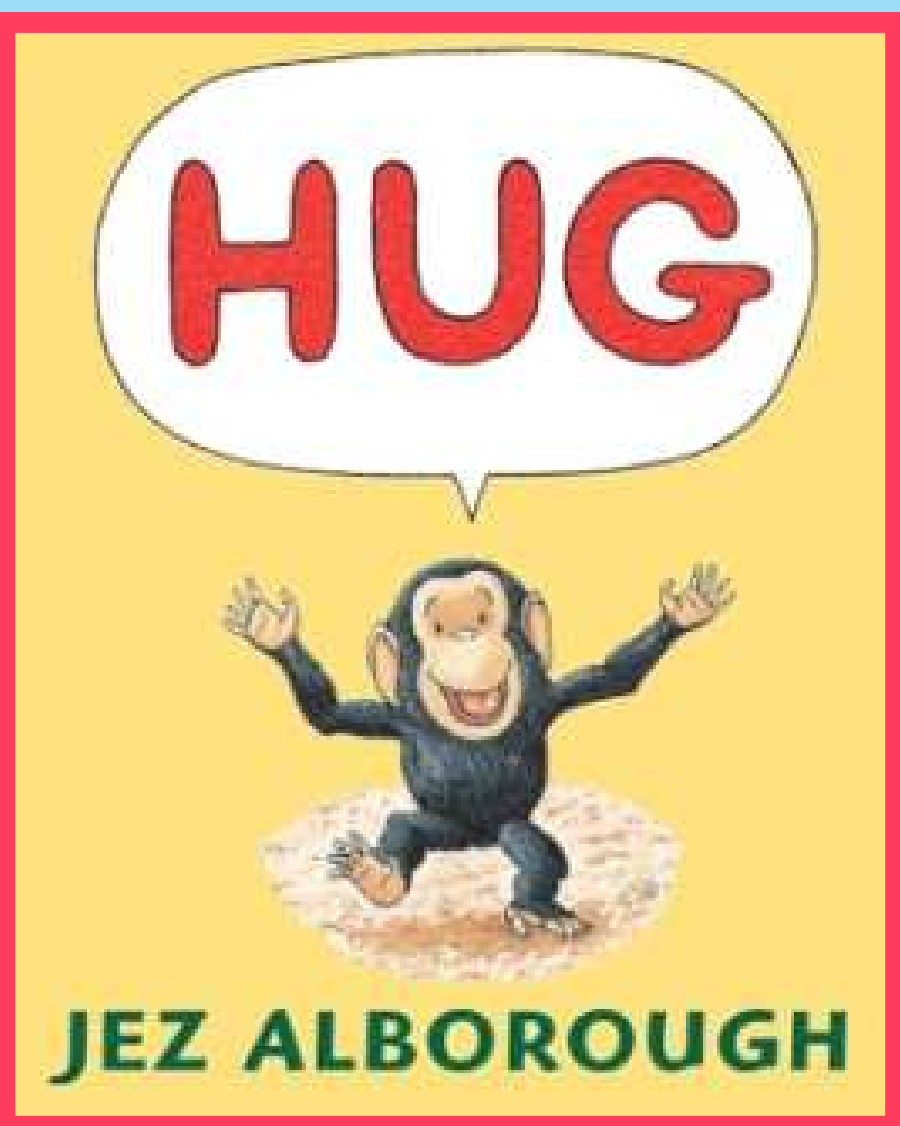
Children can join the Nursery as soon as they turn  
2 years old.

2025 - 2026

8:30 – 11:30 Morning Session	11:30 – 12:30 Lunch	12:30 – 3:30 Afternoon Session	<b>FREE With 15hrs Code</b>
8:30 – 11:30 Morning Session	11:30 – 12:30 Lunch	12:30 – 3:30 Afternoon Session	<b>FREE With 15hrs Code</b>
8:30 – 11:30 Morning Session	11:30 – 12:30 Lunch	12:30 – 2:30 Afternoon Session	<b>FREE With 30hrs code</b>
8:30 – 11:30 Morning Session	11:30 – 12:30 Lunch	12:30 – 3:30 Afternoon Session	<b>FREE 30hr code + £25 per week</b>

Working parents who meet the eligibility criteria  
(including income thresholds) will be able to claim the 30  
hours of free childcare for their 2-year-olds.

# What we learn

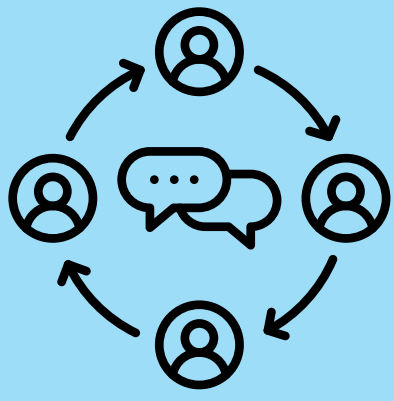


**We adhere to the statutory Early Years Foundation Stage Curriculum and integrate additional frameworks, including Development Matters (2021) and Birth to 5 Matters.**

**Our dynamic curriculum is structured around broad themes, each paired with a carefully selected high-quality book.**

**We embrace the rich diversity within our school by selecting inclusive resources and books, and by learning about various cultures. While we plan thoughtfully to support each child's development, we remain flexible to respond to their individual interests and needs.**

# Our Curriculum



**Communication &  
Language**



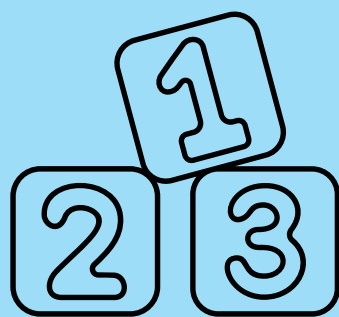
**Personal, Social &  
Emotional  
Development**



**Physical  
Development**



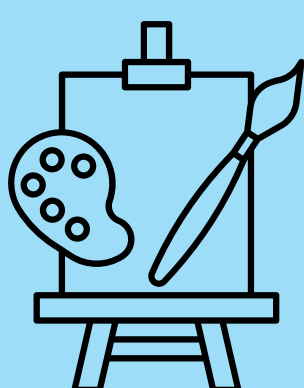
**Literacy**



**Mathematics**



**Understanding the  
World**



**Expressive Arts &  
Design**

# How we learn

We believe children learn best when given the chance to experience exciting inspiring learning opportunities both inside and outside the classroom.,



Purposeful Play  
Stories & songs  
Key experiences



A balance of child-initiated & adult-led activities



Curious questions & investigations



Tailored to each child



# Communication

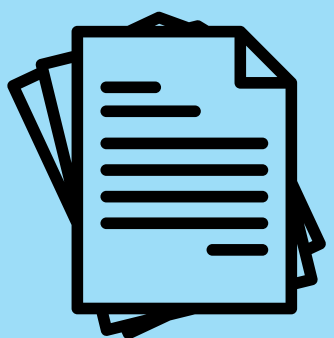
We strive to develop positive, caring and supportive relationships with all our families. We keep you up to date with your child's progress in different ways.



**Informal catch-ups at the end of sessions**



**Seesaw - our family communication app where you can see what your child has been doing, keep track of their development and communicate directly with your child's teachers.**



**Annual progress reports and meet the teacher sessions.**



**Opportunities to join your child in the classroom.**

# Our team

**A high quality setting is dependent upon high quality staff.**

**Tiddlers Nursery is led by our Level 3 Early Years Educator who will help prepare your child for Nursery, Reception and primary education. Children's learning and care is also supported by experienced and qualified Early Years Educators and our fully qualified teacher who is our Early Years Leader. Children with special education needs benefit from two SENCO's who work to make the setting inclusive for all.**

**Members of staff attend weekly briefings and are committed to continuously developing their practice.**

**The ratio in Tiddlers Nursery is 1 adult for every 5 children.**

# Where we learn

We pride ourselves on creating an environment where children feel safe, loved and inspired to learn. Children enjoy a spacious, clean and modern space to play, learn and explore. There are always a range of stimulating activities on offer.

All areas are visually stimulating and engaging. Resources are carefully labelled and well-organised so children can easily and independently access their learning.



# Outdoors

Outdoor learning is hugely important for children's development. Children have access to our Tiddlers outside garden everyday, whatever the weather.



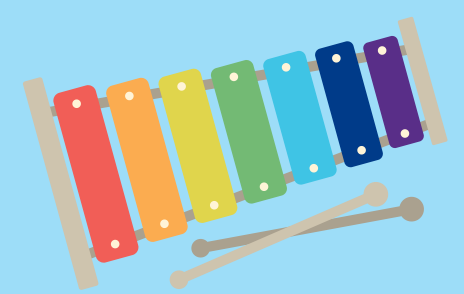
Some of the areas children will be able to access are



Water and sand play

Messy play

Noisy play



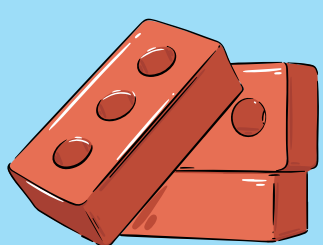
Quiet spaces for reading and games

Large construction

Bikes and scooters

Slides

Climbing equipment



# Uniform

## Winter List

White polo shirt  
School jumper/cardigan with logo  
Dark grey/black joggers/leggings  
Plain black shoes (no laces)  
welly boots  
waterproof suit

## Summer List

White polo shirt  
Dark grey/black school shorts/skirt  
Navy & white gingham school dress  
Dark grey/black joggers/leggings  
Plain black shoes (no laces)  
welly boots  
waterproof suit

## What else does my child need to bring?

book bag (no big bags)  
water bottle  
wellington boots  
waterproof/messy play suit  
coat when the weather permits

**SPARE CLOTHES**  
(bottoms/tops/socks/underwear)

## NAPPIES AND WIPES



Uniform can be ordered from:

[https://www.pmgsschoolwear.co.uk/school/colhammanorprimaryschool\\_hilli](https://www.pmgsschoolwear.co.uk/school/colhammanorprimaryschool_hilli)

# Food

**A healthy and nutritious diet plays a huge role in a child's development and wellbeing.**

**All food is prepared for children on site by our experienced catering team, Colham Catering. Lunch can be purchased at the cost of £2.00 per day if a child's in attendance at 11:45am. You are also welcome to send your child to Tiddlers with a packed lunch.**

**Lunch and snack times are also valued opportunities for our team to have relaxed interactions with children to support their learning. They create opportunities for counting, encourage back and forth conversations, and model new language.**

**We are a nut aware school and ask that no nuts or chocolate spread is sent into the setting at any time.**



# Stay in touch!

## Contact Details

**Colham Manor Primary School Violet Avenue  
Hillingdon UB83PT**



**Telephone Number: 01895 442879 /  
01895 442301**



**Email: [office@colham.org](mailto:office@colham.org)  
Website: [www.colhammanor.com](http://www.colhammanor.com)**



**Twitter: [@ColhamManor](https://twitter.com/ColhamManor)**



**Instagram: [colhammanorprimaryschool](https://www.instagram.com/colhammanorprimaryschool)**