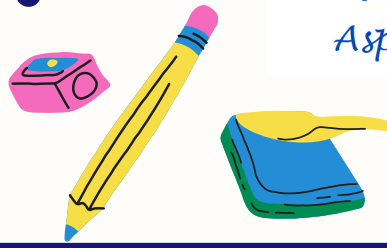


Year 4 News

Colham —
Manor
Primary School
Aspire, Achieve, Thrive



This week in Year 4...

It was lovely to be back after a relaxing half term. Children have been settling in really well and following our routines and steps to success positively.

In English, we began our new class text, Shackleton's Journey by William Grill. The children were introduced to the story through an advertisement seeking volunteers for a "hazardous journey." They explored the different roles within Shackleton's expedition team and then applied for a chosen role, using persuasive writing techniques to explain why they would be a suitable candidate. They also focused on developing descriptive language by using a range of synonyms and adjectives to express a character's thoughts, feelings, and emotions at different points in a story.

In Maths, we began our new unit on Time by revisiting key concepts from Year 3, including the relationships between years, months, weeks, and days. We then built on this knowledge by exploring the conversion of different units of time, such as seconds, minutes, and hours. The children practised converting between analogue and 12-hour digital times before moving on to reading, writing, and converting times using the 24-hour clock.

In Science, we began our new unit by exploring the relationship between viscosity and the flow of liquids through scientific inquiry. We revisited key learning from our previous units on States of Matter and Classification and Changing Habitats to help connect our understanding of scientific concepts. The children planned and carried out an investigation to compare the flow of different liquids. They explored whether a liquid's viscosity affects how quickly it flows and recorded their observations to help draw conclusions from their results.

In Geography, we began our new unit on Rivers and How They Are Used. We started by revisiting our understanding of the water cycle, exploring how water moves through the environment and the processes involved. In Computing, we learned how to design an algorithm to support an everyday task and solve a problem. In PSHE, we began our new unit on Economic Wellbeing. We developed our understanding of what makes something good value for money, considering different factors that influence spending decisions.

REACH awards

4 Attenborough - Alyaan (Healthy)

4 Hawking - Monae (Respect)

4 Maathai - Aahil (Enthusiasm)



Key Messages

1st - 12th June - Year 4 Multiplication Tables Check

A reminder to sign up to the Year 4 trip to the Thames Explorer Trust on:

1st July - 4A and 4M

3rd July - 4H

8th - 12th June - Year 4 Assessment Week

